

Graduate Diploma in Management

Acquire the skills to succeed
in your workplace

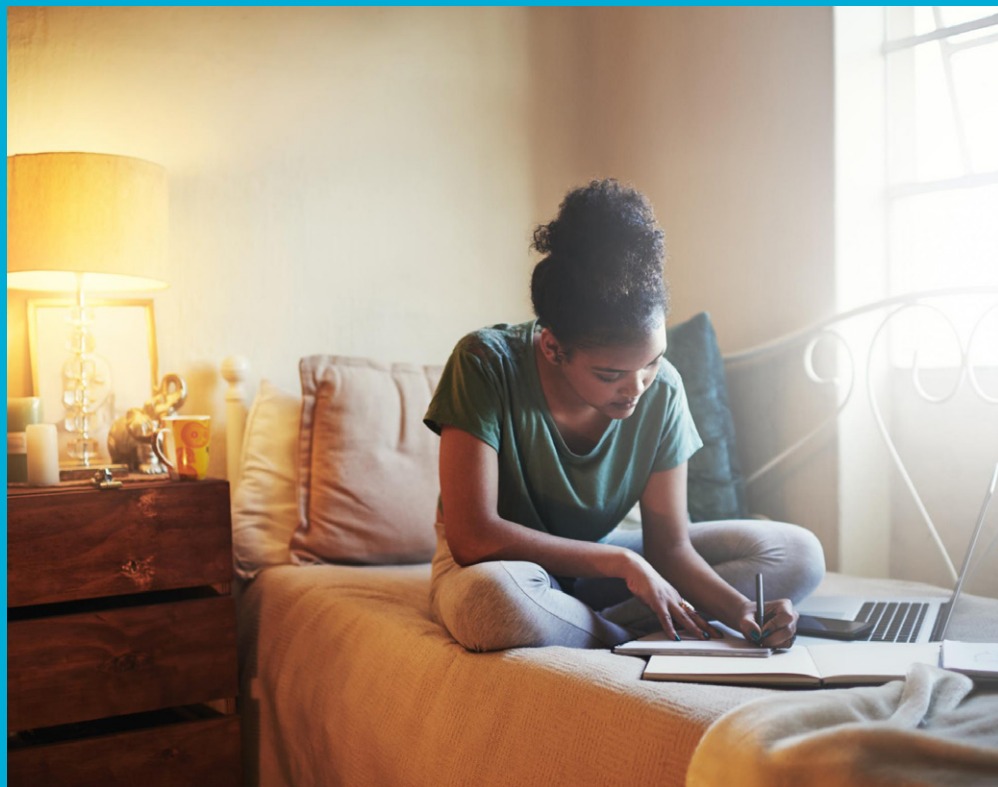
Progress onto a related
Master's degree

Discuss management issues
with expert tutors online



The Graduate Diploma in Management will equip you with a knowledge and understanding of foundational and contemporary challenges in management. You will learn how to formulate and develop arguments on management issues in a logical manner. Expert tutors will help you to understand aspects of business and sociology management relevant to managing organisations effectively.

As a teaching centre for the University of London International Programmes, CEG ONLINE offers online teaching and support for this course. Our user-friendly online learning platform will allow you to interact with tutors and fellow students and to discuss traditional and contemporary management issues. Our tutors will actively help you with exam preparation and in giving you individual feedback.



Study options

Depending on your individual requirements, you have three options regarding your study with CEG ONLINE.

1 Apply to study and get tuition for your whole Graduate Diploma right from the start

Apply for the whole programme and get study materials and our tuition service for all four courses we offer.

2 Add our tuition service to your existing study for the Graduate Diploma

If after applying to study for the Graduate Diploma you realise additional tuition for individual or all courses would benefit you, you can select this option.

3 Add exam preparation to your existing study for the Graduate Diploma

If after applying to study you feel individual exam preparation would benefit you, you can select our tuition service for specific courses, either one at a time or for the full number you require.

Who is this course for?

Graduates who wish to

- > Gain a stronger basis for entry to postgraduate study
- > Acquire and demonstrate vocational skills in the workplace and beyond
- > Study flexibly and online due to professional and personal commitments

Course content

The Graduate Diploma in Management is made up of four courses:

- > Business Management in a Global Context
- > Core Management Concepts
- > Human Resource Management
- > Principles of Marketing

Assessment

The London School of Economics and Political Science (LSE) develops the syllabuses, prepares the study materials, and is responsible for the assessment of International Programmes students. You will be assessed by unseen written examinations that will take place once a year at established centres worldwide. Upon successful completion of your course, you will receive a University of London award.

Entry requirements

- An acceptable bachelor degree; or
- an acceptable Master's degree (or any other acceptable/ appropriately accredited Level 7 award) provided this is at least 1 year full time in duration; or
- an acceptable Level 5 or Level 6 award (such as an HND or Graduate Certificate) provided this is at least 1 year full time in duration. In addition applicants must submit evidence of at least 2 years relevant work experience
- In addition to one of the above you must also demonstrate competence in Mathematics at least equivalent to UK GCSE/ GCE 'O' level at grade C or above

Since the language of instruction, reading and assessment is English, you will also need to meet our English language requirements. Please visit our [website](#) for more information about the required standard of English.



Tuition fees

If you apply for the full Graduate Diploma you will need to pay the following tuition fees.

University of London:

Before you enrol	Application fee (non-refundable)	£88
First year	Initial registration fee	£874
	Examination entry fee	£264 x 2
Second year	Continuing registration fee	£399
	Examination entry fee	£264 x 2
Total (2-year completion)*		£2417

*Maximum duration 5 years. For each additional year of study a continuing registration fee applies.

CEG ONLINE:

	Payment up-front	Instalments (total)		
		2	3	4
4 courses (full programme)	£3,500	£1,850 (£3,700)	-	£1,050 (£4,200)
3 courses	£3,200	-	£1,180 (£3,540)	-
2 courses	£2,500	£1,320 (£2,640)	-	-
1 course	£1,450	-	-	-

+44 (0) 1223 447 769

cegonline.london

info@cegonline.london

cegonline.london

Key dates

Registration opens	May 2017
Course starts	September 2017
Examinations take place	April/May 2018

Quick facts

Level:	6
Duration:	Minimum 2 years, maximum 5 years
Academic direction:	LSE
Mode of study:	Online with teaching support

How to apply and pay for tuition

Please apply online on our website cegonline.london. If you are an accepted student already and wish to purchase tuition please ensure that you have your University of London student number ready. You can pay your tuition fees by email, Flywire or directly through our website by using a credit or debit card.

“I feel really happy that I’ve now graduated. I couldn’t imagine that I could complete a diploma course offered by a prestigious university.”

Hiroshi Kawaguchi
Graduate Diploma in Management, Japan

Credit: LSE

Contact us

info@cegonline.london
+44 (0) 1223 447 769

cegonline.london



cegonline.london

